



**Youth
Careers
Collective**

Theory of Change



Youth Careers Collective Target Population

Wider service population

Beneficiaries we are able to work with under the terms of our Memorandum of Association, i.e. 9 to 24 year olds.

Highest need population

Young people who are hardest to engage, may include school refusers and those with severe learning and emotional needs. Other organisations are better placed than Youth Careers Collective to work with this cohort. The exception may be when we deliver in partnership with specialist providers.



Target population

Young people we actively seek to work with who will benefit the most from our services and support, include:

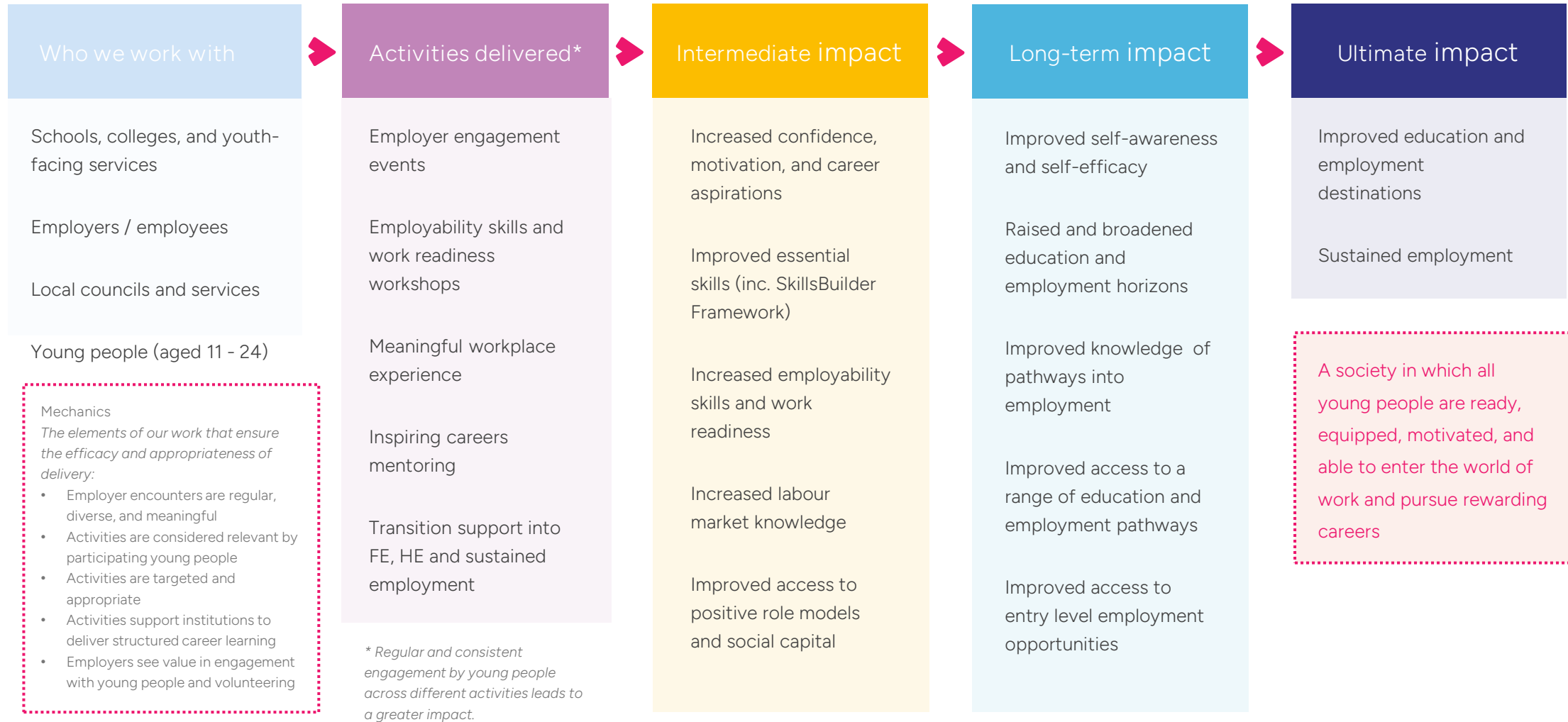
- 11-to-18 year olds **experiencing barriers to entering employment**
- Young people on **Free School Meals**
- Young people eligible for **Pupil Premium**
- Young people with **Special Educational Needs and Disabilities**
- Young people **attending an Alternative Provision**
- Young people living in **low social mobility areas**
- Young people with **caring responsibilities**
- 16-to-24 year olds who are **currently 'Not in Employment, Education or Training'**

Whilst we seek to direct our services towards young people and communities who will most likely benefit, it is legitimate for us to work more broadly with cohorts of forms groups, year groups, and whole schools, raising employer engagement standards across whole schools and communities.

However, we remain aware, that with limited capacity and resource, every young person we help from our service population may limit our ability to support those within our target population.

To increase our engagement with young people in our target population, we will actively seek to work in regions of lowest social mobility and identify and access young people who will most benefit, within schools, colleges, youth services, local authorities and other community-based provisions.

Youth Careers Collective Theory of Change



youthcareers.org.uk
info@youthcareers.org.uk